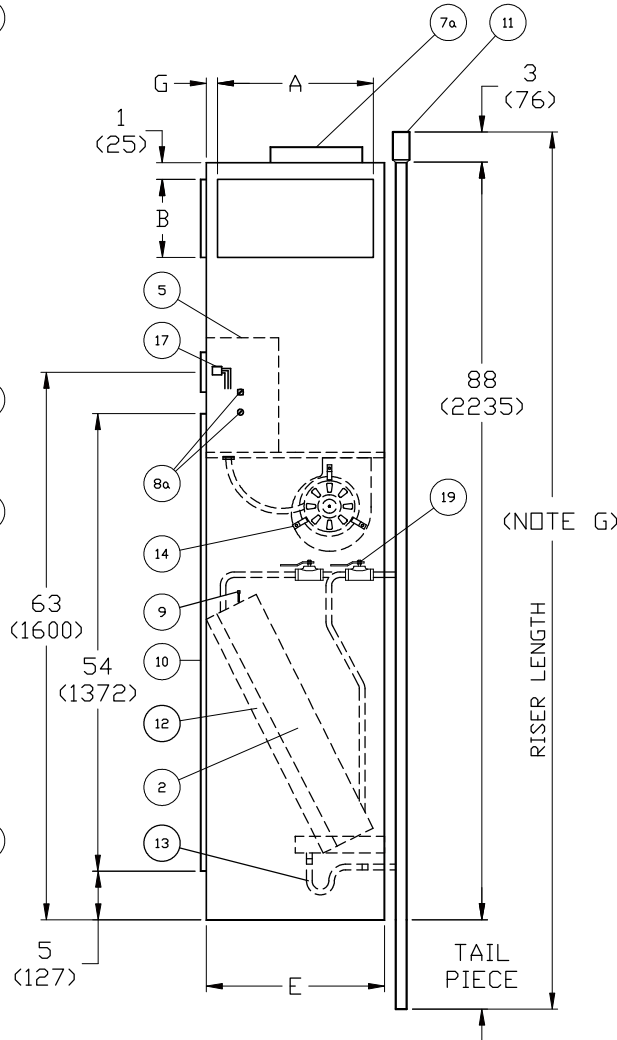
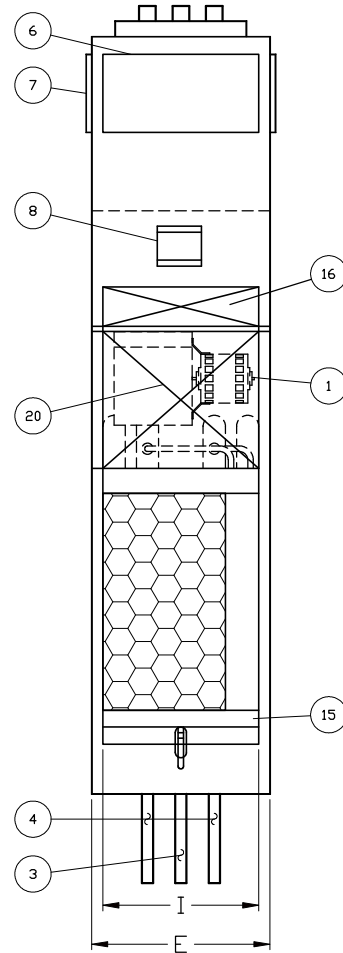
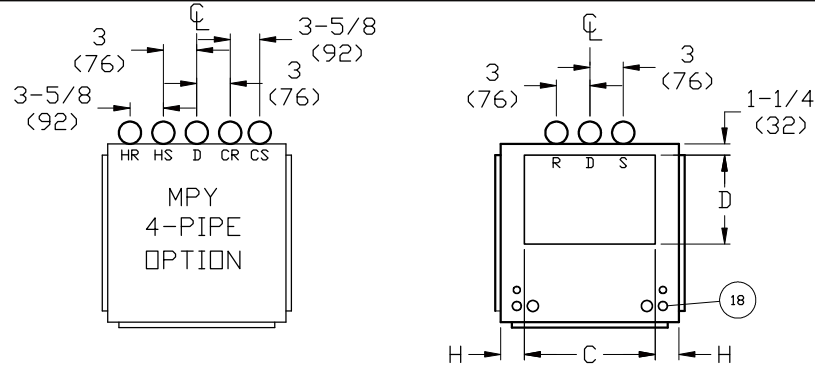


REVISION HISTORY		
REV	DATE	ECN
-	09/24/08	08-0476
A	02/24/10	10-0227
B	04/06/10	10-0465



NOTES:

- UNITS ARE FABRICATED OF GALVANIZED STEEL WITH A 16 GA GALVANIZED FAN DECK.
- ALL RISERS ARE INSULATED.
- THERMOSTATS SHIPPED LOOSE FOR FIELD CONNECTION.
- RISERS ARE FACTORY PIPED TO COIL WITH VALVES AS SPECIFIED.
- BLOWER, MOTOR, VALVES, COIL, AND FILTER ARE ACCESSIBLE THROUGH THE RETURN AIR OPENING.
- UNIT AND CONTROL BOX ARE INSULATED.
- RISER LENGTH=15' (2921). CONSULT PROJECT SUBMITTAL FOR RISER SPECIFICATIONS.
- MAXIMUM RISER SIZE IS 2-1/2" (64) DIA. IF LARGER SIZES ARE REQUIRED, PLEASE CONSULT THE FACTORY.
- EXPANSION LOOPS IN HOT WATER HEATING CIRCUITS AS REQUIRED.
- A 9"x2-1/4" (229x57) SLOT IS PROVIDED IN THE INSIDE BACK PANEL FOR COIL CONNECTION PENETRATION TO PERMIT EXPANSION & CONTRACTION OF RISERS. CARE MUST BE TAKEN TO POSITION THE RISERS SO THAT COIL CONNECTION IS AT CENTER OF SLOT.
- DWG IS PICTORIAL (SEE UNIT ARRANGEMENTS FOR ACTUAL SUPPLY AND RETURN AIR ORIENTATION).
- DIMENSIONS ARE IN INCHES, DIMS IN () ARE IN MM.

MODEL	SGLE. SUPPLY			DBLE. SUPPLY			TOP SUPPLY			DIMENSIONS					FILTER SIZE
	A	B	SIZE	A	B	SIZE	C	D	SIZE	E	F	G	H	I	
MPY03	14 (356)	8 (203)	14X8	14 (356)	6 (152)	14X6	14 (356)	10 (254)	14X10	17 (432)	-	1-1/2 (38)	1-1/2 (38)	14 (356)	12-1/2 X 24-1/4 X 1 (318X616X25)
MPY04	14 (356)	12 (305)	14X12	14 (356)	6 (152)	14X6	14 (356)	10 (254)	14X10	17 (432)	-	1-1/2 (38)	1-1/2 (38)	14 (356)	12-1/2 X 24-1/4 X 1 (318X616X25)
MPY06	18 (457)	10 (254)	18X10	18 (457)	6 (152)	18X6	16 (406)	12 (305)	16X12	20 (508)	-	1 (25)	2 (51)	18 (457)	16-1/4 X 26-3/4 X 1 (413X679X25)
MPY08	18 (457)	12 (305)	18X12	18 (457)	6 (152)	18X6	16 (406)	12 (305)	16X12	20 (508)	-	1 (25)	2 (51)	18 (457)	16-1/4 X 26-3/4 X 1 (413X679X25)
MPY10	-	-	-	22 (559)	8 (203)	22X8	18 (457)	16 (406)	18X16	24 (610)	-	1 (25)	3 (76)	22 (559)	20-1/2 X 29-1/4 X 1 (521X743X25)
MPY12	-	-	-	22 (559)	8 (203)	22X8	18 (457)	16 (406)	18X16	24 (610)	-	1 (25)	3 (76)	22 (559)	20-1/2 X 29-1/4 X 1 (521X743X25)

ITEM	DESCRIPTION	QTY
1	MOTOR, 3 SPEED, PSC, W/ QUICK CONNECT	1
2	COIL 1/2"(13) O.D. COPPER TUBE	1
3	RISER, DRAIN, (COPPER)	1
4	RISER, SUPPLY & RETURN (COPPER)	2/4
5	CONTROL BOX	1
6	SUPPLY AIR OPENING(S)	
7	DUCT COLLAR, 1/2"(13) EXTENSION (TYPICAL)	
7a	SUPPLY & RETURN TOP DUCT COLLAR, 1" (25)	
8	CONTROL OPENING (SURFACE MOUNT STAT)	1
8a	KNOCKOUT (FOR OPTIONAL REMOTE MOUNTING) /SIDE	2
9	AIR VENT, MANUAL	1
10	RETURN AIR OPENING	1
11	3"(76) EXPANDED SECTION OF RISER	3/5
12	FILTER, THROWAWAY, 1"(25), (F&I)	1
13	FLEXIBLE DRAIN TUBE/P-TRAP	1
14	BLOWER	1
15	DRAIN PAN	1
16	ACCESS PANEL (CONTROL BOX)	1
17	MOLEX CONNECTOR FOR FIELD INSTALLED STAT	1
18	ELECTRICAL KNOCKOUTS	1
19	1/2"(13) ISOLATION BALL VALVES (F&I)	2/4
20	ACOUSTICAL SERVICE ACCESS PANEL	1

MPY UNIT	
MODEL MPY	
JOB NUMBER	
JOB NAME	
DRAWN BY D.MCGOUGH	
DRAWING NUMBER I100-90008404	REVISION B
	SHEET 1 OF 1